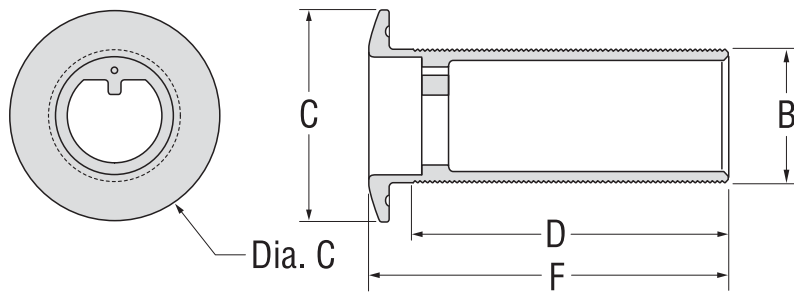
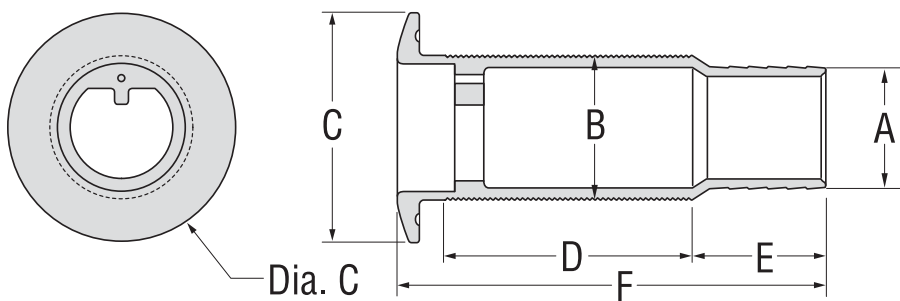


# Stainless Steel 90° Thru-Hulls, Barbed Specifications:

A Hose Size	B Flange Dia.	C Thread O.D.	D Thread Length	E Barb Length	F Total Length	Bulk without Gasket	Bulk with Gasket	Aftermarket Packaging**
<b>THREADED</b>								
—	1-7/8"	3"	3-1/2"	—	3-7/8"	66565-1	66565G1	—
—	2-23/64"	3-5/8"	2-1/2"	—	2-7/8"	66567-1	66567G1	—
<b>BARBED</b>								
1-1/2"	1-7/8"	3"	3-1/2"	1-1/2"	5-1/2"	66553-1	66553G1	66553-3
2"	2-23/64"	3-5/8"	2-1/2"	1-5/16"	4-1/2"	66555-1	66555G1	—
1-1/2"	1-7/8"	3"	2-1/4"	1-1/2"	4-1/2"	66557-1	66557G1	—



**Threaded**



**Barbed**