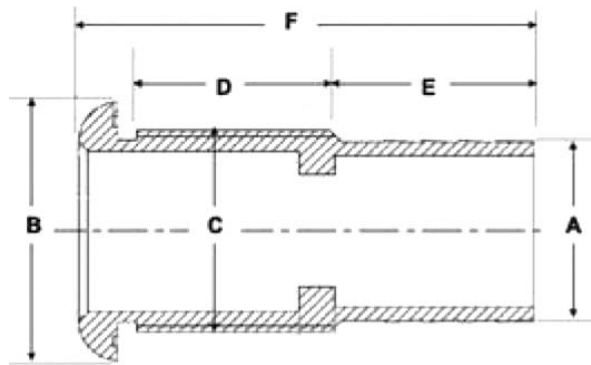
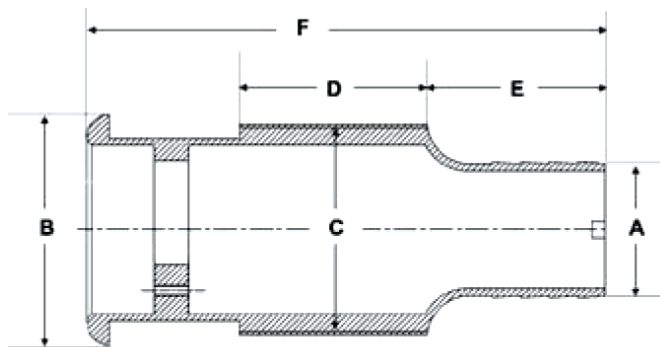


Stainless Steel Narrow Flange Thru-Hulls Specifications:

A Hose Size	B Flange Dia.	C Thread O.D.	D Thread Length	E Barb Length	F Total Length	Bulk without Gasket	Bulk with Gasket
THRU-HULLS, STANDARD LENGTH							
5/8" I.D.	1-7/10"	1-3/10"	1-2/5"	1-1/8"	3"	67555-1	67555G1
3/4" I.D.	1-7/10"	1-3/10"	1-3/10"	1-1/4"	3"	67554-1	67554G1
1" I.D.	1-7/10"	1-3/10"	1-2/5"	1-1/8"	3"	67556-1	67556G1
1-1/8" I.D.	1-7/10"	1-3/10"	1-1/4"	1-1/8"	2-7/8"	67557-1	67557G1
1-1/2" I.D.	2-2/5"	1-7/8"	1-1/2"	1-3/5"	3-2/5"	67551-1	67551G1
2" I.D.	3.13"	2-3/8"	2.93"	2.04"	6.09"	67552-1	67552G1
THRU-HULLS, LONG LENGTH							
3/4" I.D.	1-7/10"	1-3/10"	1-1/2"	1-1/8"	4-1/4"	67558-1	—
1-1/8" I.D.	1-7/10"	1-3/10"	1-1/2"	1-1/8"	4-1/4"	67561-1	—
1-1/2" I.D.	2-2/5"	1-7/8"	1-1/2"	1-7/16"	4-15/16"	67562-1	—
SCUPPER VALVE							
1-1/2" I.D.	2-3/5"	1-7/8"	2"	2"	5-3/4"	67553-1	67553G1



Thru-Hull



Scupper Valve