



# STAINLESS STEEL CAPPED COMPOSITE THRU-HULLS



**STAINLESS STEEL LOOK AT A  
FRACTION OF THE PRICE**

**CORROSION-RESISTANT**

# STAINLESS STEEL CAPPED COMPOSITE THRU-HULLS



Attwood would like to introduce our completely new line of stainless steel capped composite thru-hull fittings. Designed for the value conscious customer, these fittings provide the look of a stainless steel thru-hull at a fraction of the cost.

## CORROSION-RESISTANCE

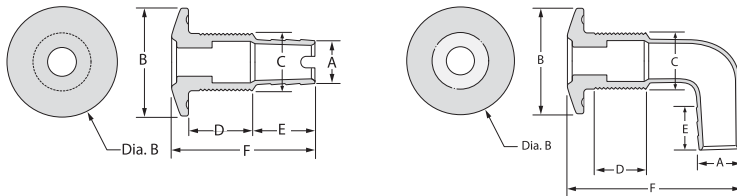
Manufactured with high quality stainless steel caps and engineered composite bodies, these thru-hulls are designed to resist degradation as a result of chemical and saltwater exposure.

## CONSISTENT LOOK

To create a uniform look, Attwood has designed its 5/8" thru 1-1/4" barbed thru hulls with a common exterior surface.

## IMPROVED INSTALLATION

Always keeping the builder in mind, each fitting incorporates several different types of assembly features that allow for "single operator" installation.



A Hose I.D.	B Flange Dia.	C Thread O.D.	D Thread Length	E Barb Length	F Total Length	Installation Hole Size	Max. Hull Thickness	Bulk Packaging
<b>STRAIGHT THRU-HULLS</b>								
5/8"	1-7/8"	1.29"	1.54"	1.0"	3.36"	1-3/8"	1.4"	68555-1
3/4"	1-7/8"	1.29"	1.54"	1.0"	3.36"	1-3/8"	1.4"	68554-1
1"	1-7/8"	1.29"	1.54"	1.0"	3.36"	1-3/8"	1.4"	68556-1
1-1/8"	1-7/8"	1.29"	1.54"	1.32"	3.36"	1-3/8"	1.4"	68557-1
1-1/4"	2-3/8"	1.55"	1.54"	1.6"	3.96"	1-1/2"	1.4"	68550-1
1-1/2"	2-3/8"	1.55"	1.54"	1.6"	3.96"	1-1/2"	1.4"	68551-1
2"	3-1/4"	2.16"	2.09"	1.96"	4.94"	2-1/8"	1.8"	68552-1
<b>90 DEGREE THRU-HULLS</b>								
5/8"	1-7/8"	1.29"	1.60"	1.27"	3.48"	1-3/8"	1.4"	68576-1
3/4"	1-7/8"	1.29"	1.60"	1.27"	3.48"	1-3/8"	1.4"	68577-1
1"	1-7/8"	1.29"	1.60"	1.27"	3.75"	1-3/8"	1.4"	68578-1
1-1/8"	1-7/8"	1.29"	1.60"	1.5"	3.75"	1-3/8"	1.4"	68579-1
1-1/4"	2-3/8"	1.55"	1.54"	1.5"	3.92"	1-1/2"	1.4"	68580-1
1-1/2"	2-3/8"	1.55"	1.54"	1.5"	3.92"	1-1/2"	1.4"	68581-1